

Why don't you study abroad in Saitama?



Mascots of Saitama "Kobaton" & "Saitamatch"

Recommendation to study abroad in Saitama

Why SAITAMA? 1 Located in Metropolitan area

Metropolitan area gathers many people and business organizations.

There are about **12,000** overseas students in Saitama

About **a half of overseas students** coming to Japan study in Metropolitan area.

About 12,000 overseas students presently live in Saitama.
Result of an Annual Survey of International Students in Japan 2018-JASSO

There are many business organizations in Saitama, **the fifth** most in Japan

It is the third in number of business organizations after Tokyo and Kanagawa in Metropolitan area.

2016 Economic Census-Result of Activity Investigation Industrial gross (Basic) -Saitama Department of General Affairs Statistics Division

The fifth biggest economic size in Japan

Nominal gross prefectural product is about 22.3 trillion yen, the fifth biggest economic size in Japan.

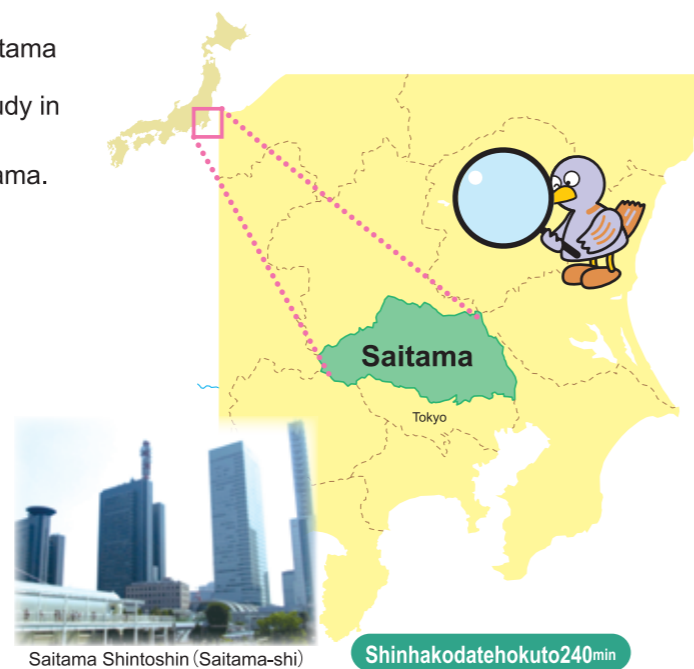
2015 Prefectural resident economic calculation - Cabinet Office

Easy access to the Tokyo area

It takes only 30 minutes to get to Ikebukuro or Ueno by taking train from Omiya, the biggest terminal station in Saitama.

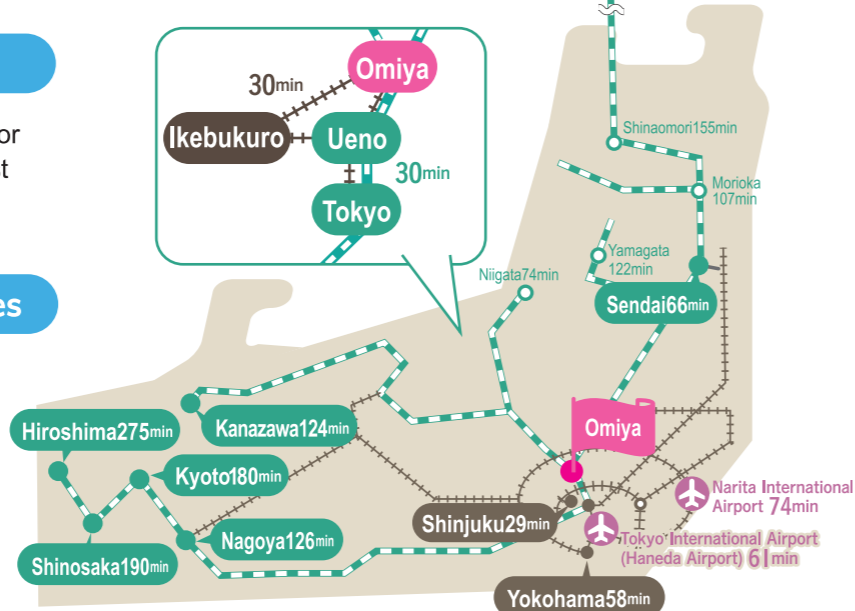
Easy access to other metropolises

Easy access to tourist areas such as Kyoto, Sendai, Hiroshima.



Saitama Shintoshin (Saitama-shi)

Shinhakodatehokuto 240min



Access to other metropolises

Why SAITAMA?

2 Easy to live

Lower rent than in Tokyo

● Tokyo ▶▶▶ **86,000**yen

● Saitama ▶▶▶ **63,000**yen

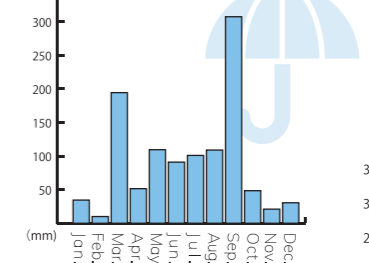
※Rent of 33㎡ private apartment room for a month
Statistical Observations of Prefectures 2018

Many fair days

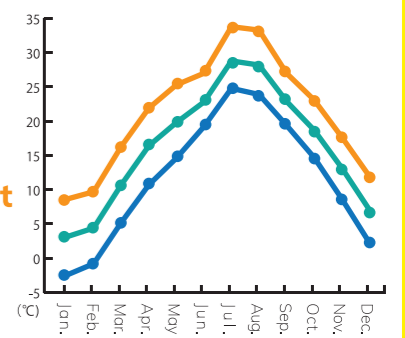
56 fair days out of 365 days
(The most fair-days in Japan in 2016)

Statistical Observations of Prefectures 2018

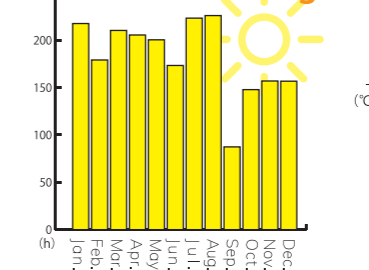
Rainfall



Highest temperature
Average temperature
Lowest temperature



Hours of sunlight



Japan Meteorological Agency Website (Saitama observation point, 2018)

Why SAITAMA?

3 Many places for healing



Arakawa-river (widest river in Japan)



Tove Jansson Akebono Children's Forest Park (Hanno-shi)



Saitama Children's Natural Zoo (Higashi-Matsuyama-shi)



Memorial Park for town rule enforcement (Ina-machi)



Soka Matsubara Promenade (Soka-shi)